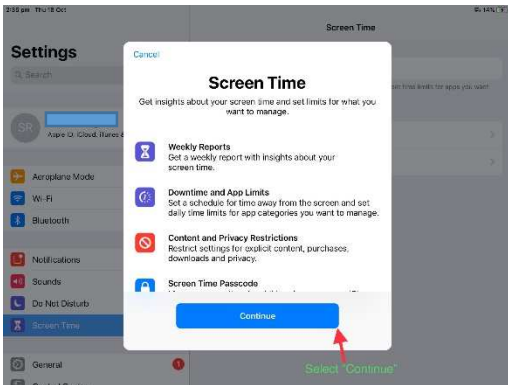




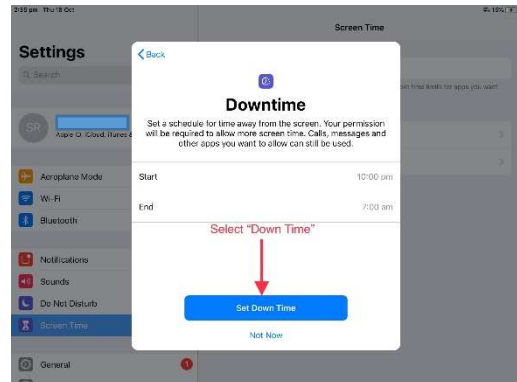
Setting up Screen Time

These instructions are only if you have already set up Family Sharing

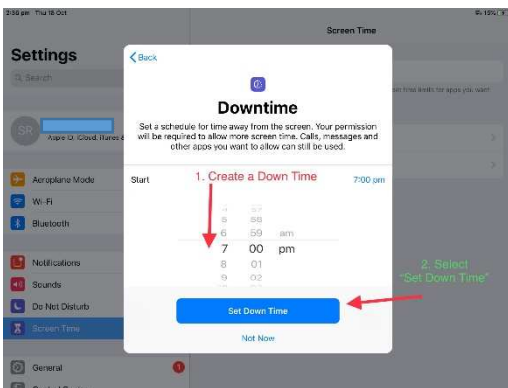
Screen Time is a new feature in iOS12, it allows you to monitor and control your own and your child's Screen Time.



Select *Screen Time* and Select *Continue*

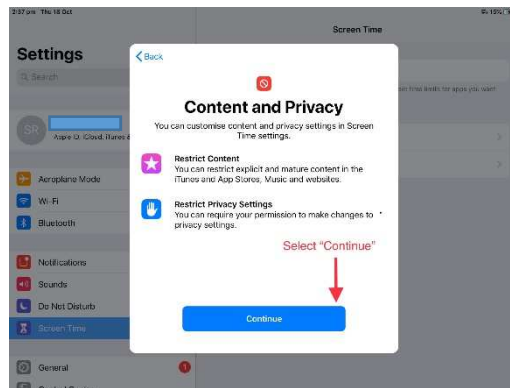


Select *Set Down Time*



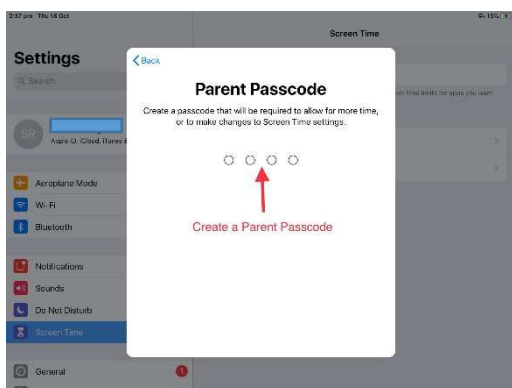
Step 3.

Create an age appropriate Down Time for your child.



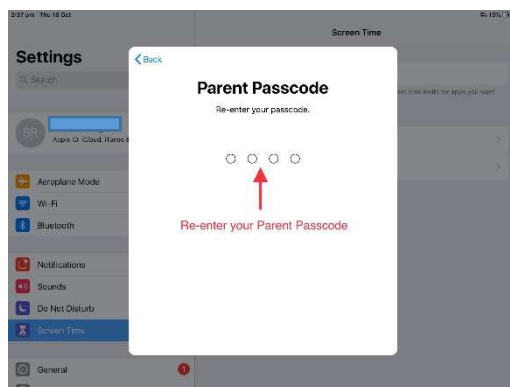
Step 4.

Select *Continue*



Step 5.

- Create a *Parent Passcode* that only you know that is different to your child's iPad Passcode
- Store this password as you will need it to set up restrictions



Step 6.

Re-enter your *Parent Passcode*

Congratulations, you have finished setting up Screen Time for your child!

NEXT: refer to instructions on Setting Up Screen Time Restrictions